

## BIO II

Available in 3 or 4 feet

Type II bio safety cabinet

Small in size,  
big on performance

PRODUCT  
SHEET

Operator  
Protection

Product  
Protection

Environment  
Protection



# BIO II

## FEATURES

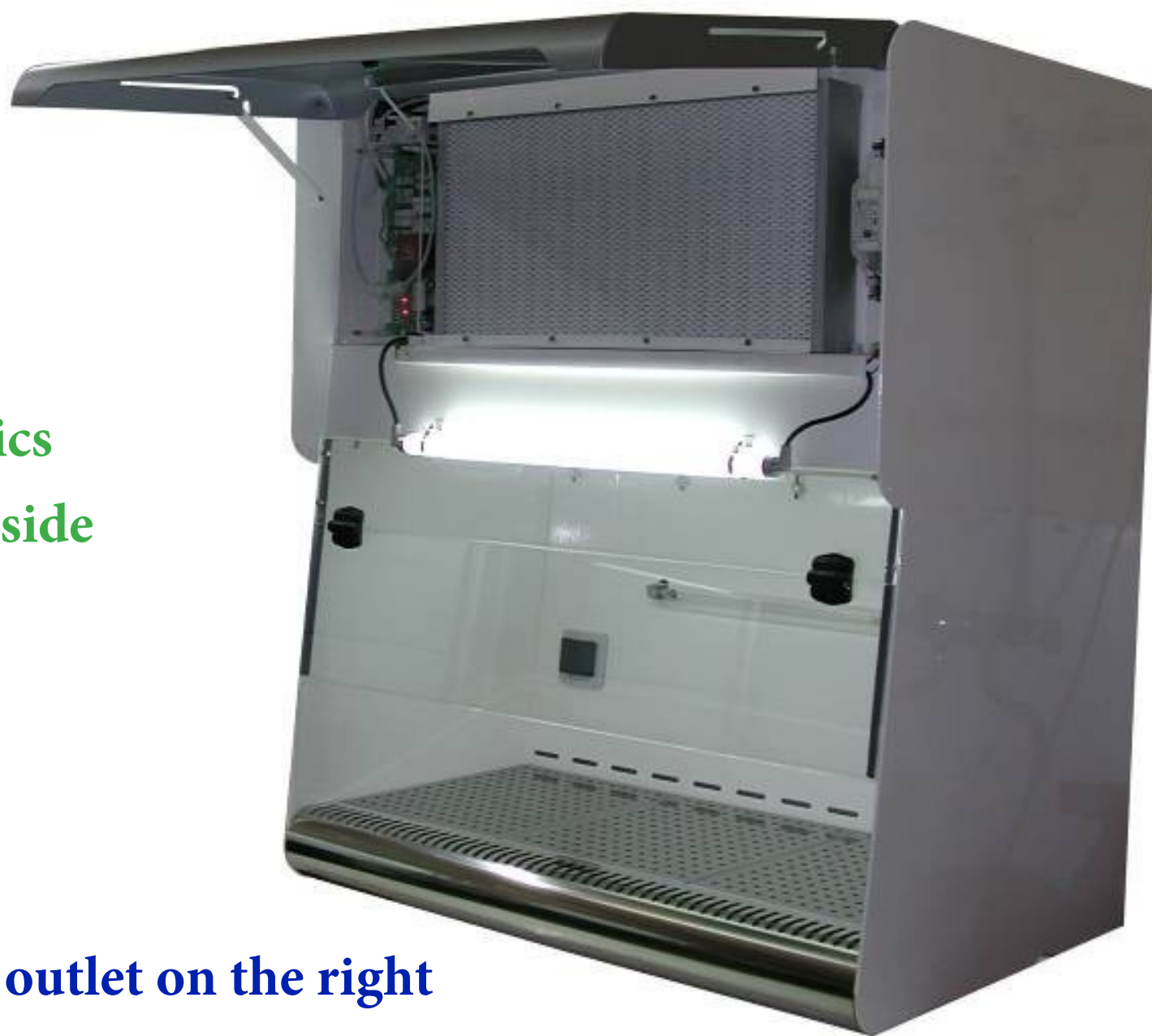
- H14 supply filter with laminar flow veil
- H14 exhaust filter
- The enclosure structure is made of epoxy-painted mild steel
- Compact equipment

- 6° inclined sash for optimized ergonomics
- Lighting located outside the working volume

- Germicidal UV lamp
- An integrated power outlet on the right

- Rounded front air barrier for improved ergonomics (removable)

- The work surface is made of 304L stainless steel



## PROTECTION :

- PRODUCT
- OPERATOR
- ENVIRONMENT

- Single-fan unit with automatic ECM regulation

- Front-access maintenance (lift-up cover)

- Control panel with LCD display (speed, clogging, alarms...)

- Low noise level: < 55 dB



Shutter

## APPLICATIONS :

- Medical analysis.
- Healthcare.
- Pharmaceutical.
- Biotechnology.
- Food industry.
- Others...

Type II microbiological safety cabinets are designed to protect the operator, the work process and the immediate environment from airborne contamination.

The BIO II is suitable for handling pathogenic agents of classes 1, 2, or 3.

It is especially compact to fit into confined spaces.



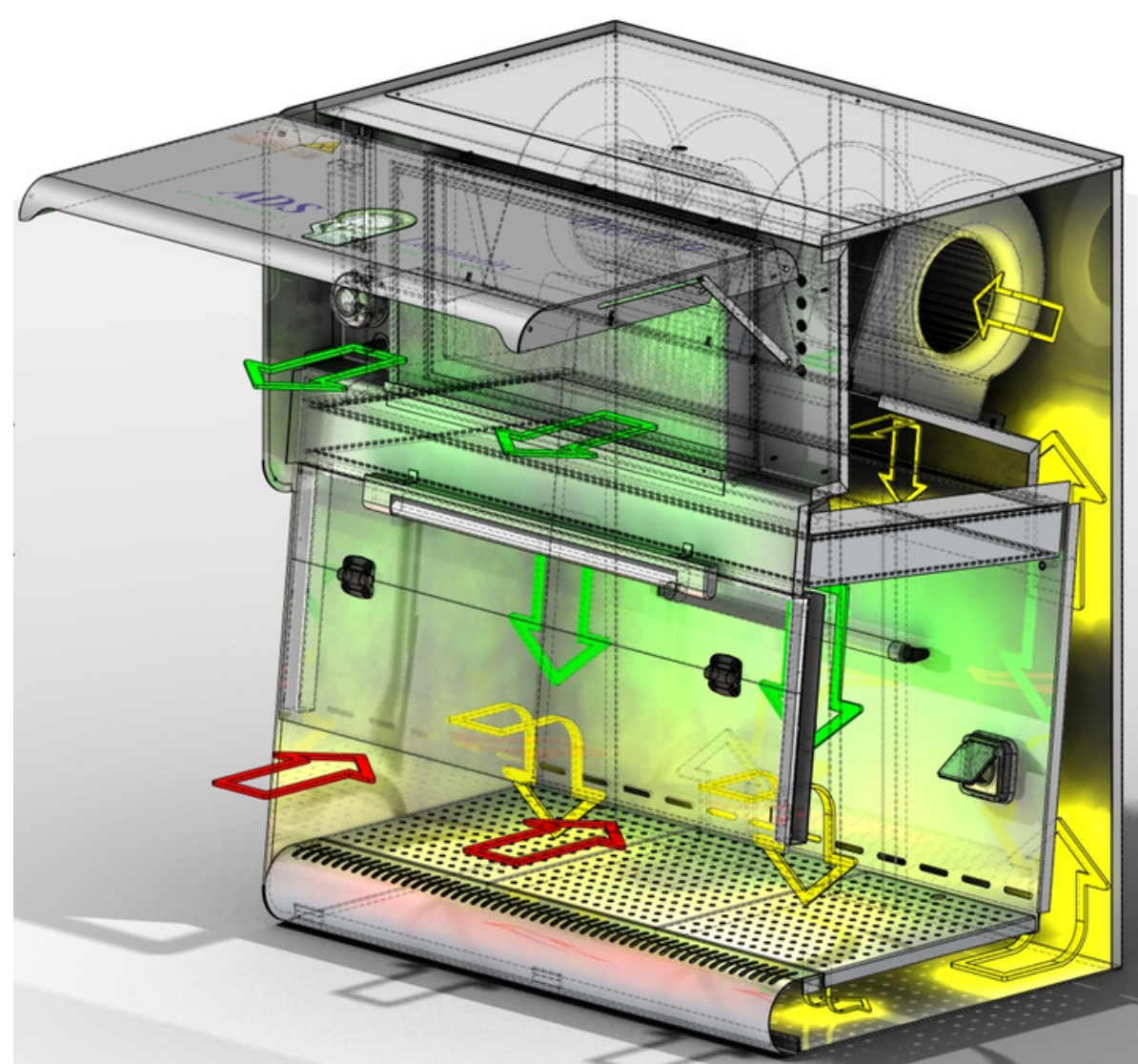
# BIO II

## OPERATING PRINCIPLE

A sterile ISO 5 laminar airflow is blown vertically onto the work surface after passing through a first absolute H14 filter, ensuring product protection.

The air flow is fully drawn back through the perforations located in the work surface. Part of this recirculated air is discharged into the room through a second H14 filter, ensuring environmental protection.

The amount of air discharged is compensated by the aspiration of an equivalent volume of air at the front of the work surface. This aspiration, called the “Air Barrier,” creates a dynamic barrier between the work process and the operator: operator protection.

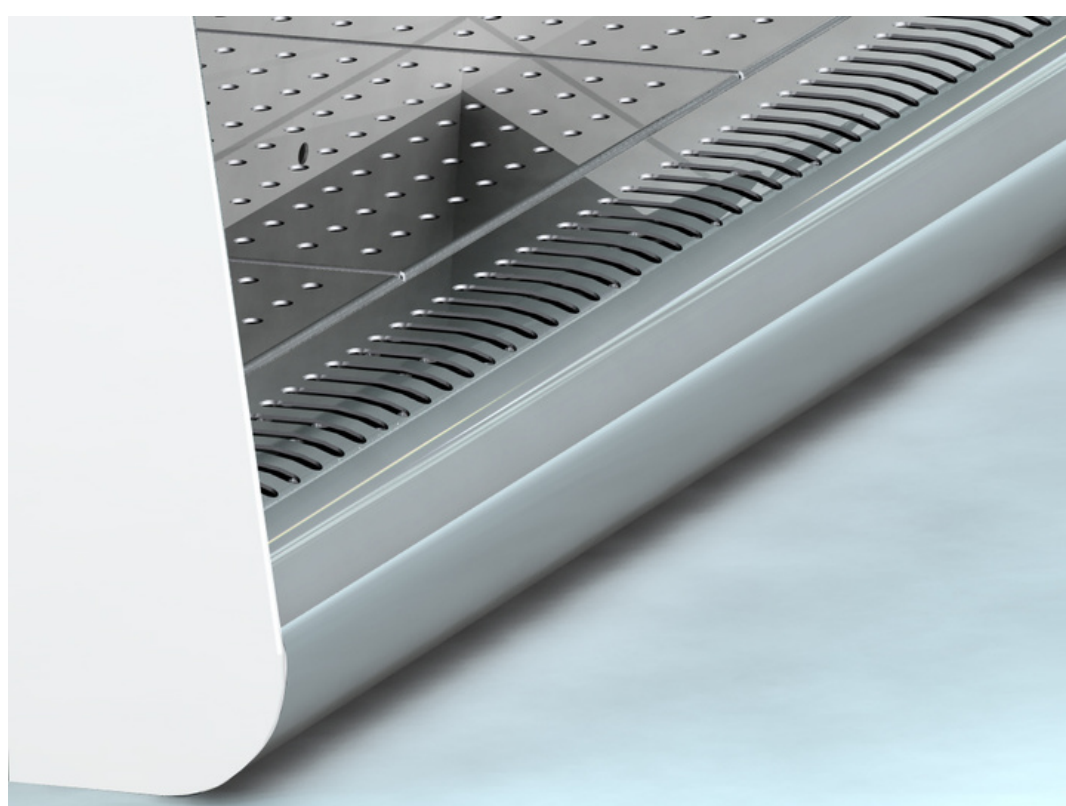


## SPECIAL FEATURES

In front of the work surface, the intake grille is made of 304L stainless steel.

Its rounded shape ensures excellent workstation ergonomics.

To allow cleaning and decontamination of the working volume, the intake grille is removable.



**Air barrier**

The work surface is made of bright annealed 304L stainless steel, perforated in 3 or 4 sections depending on the 9 and 12 models.

To allow cleaning and decontamination of the working volume, the work surface is removable.

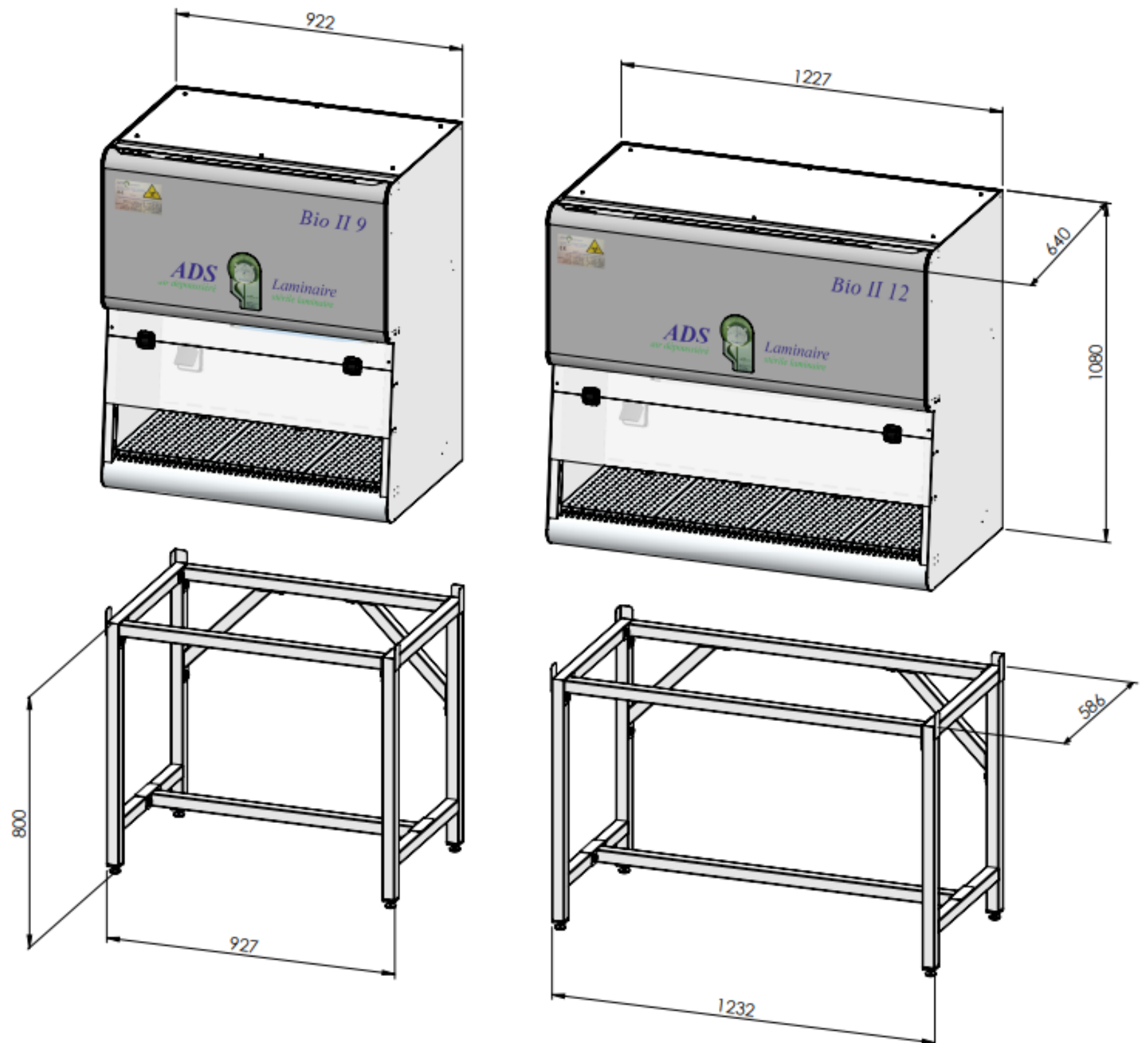


**Perforated and removable split work surface**

# BIO II

## ADVANTAGES

- Compact equipment
- Single-fan with automatic ECM regulation
- Ergonomics: inclined sash, rounded air barrier
- Front-access maintenance (lift-up cover)
- Shutter
- Only 3.5ft height



	BIO II 9	BIO II 12
Weight	264.6 lbs	330.7 lbs
Supply airflow	22250 ft <sup>3</sup> /h	17450 ft <sup>3</sup> /h
Exhaust airflow	5823 ft <sup>3</sup> /h	7890 ft <sup>3</sup> /h
Useful width	36.2 in	48.3 in
Overall width	36.3 in	48.4 in
Useful height	18.5–20.3 in	
Overall height	42.5 in	
Useful depth	15.2 in	
Overall depth	25.2 in	

## DOCUMENTS

The following documents are supplied upon delivery:

- certificate of conformity
- warranty certificate
- user manual in French

## OPTIONS

- Base on leveling feet
- Additional power outlet
- Stainless steel receptacle
- 110-volt power supply
- Work surface in 316L stainless steel and/or in a single piece